

OUR THEME - *Simplicity*

Our souls were not made for frantic, frenzied living. And yet, as 21st century women, we often find ourselves living lives that are a mile wide and an inch deep as we struggle to fulfill multiple, often competing roles - wife, mother, employee, grandmother, daughter, caretaker, church member, friend, good neighbor, responsible citizen - and finally beloved child of God.

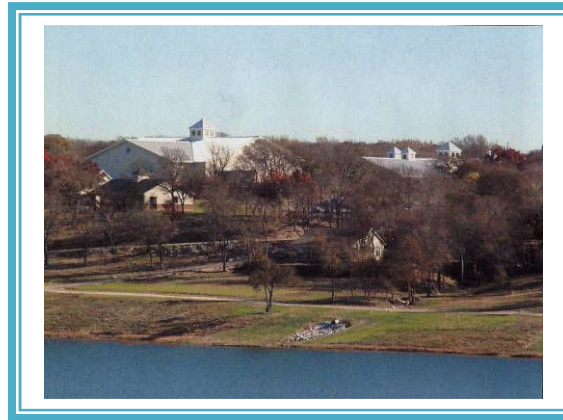


Our speaker says she too struggles to find peace and balance in her hectic life as a pastor, wife, and mother.

With great anticipation, she invites us all to enjoy a weekend in which we explore what it would look like to live life as God intended it. A life characterized by intimate connection with our Creator, authentic relationships with others, and a profound hope for the *shalom* that is to come. A life of freedom, beauty, connection, and true satisfaction for our souls.

A worship service on Sunday including communion will complete the weekend.

LAKEVIEW CONFERENCE CENTER



The Lakeview Conference Center is about 35 miles from Arlington. It is located between Waxahachie and Maypearl on FM 66. Carpooling will be available.

The center provides onsite dining, modern lodge rooms, and convenient meeting areas. The spacious grounds include a 30-acre lake.

You will receive a map to the conference center with your confirmation letter.



Registration forms are available at the church or on the church website:

www.firstprestexas.org

KEEPING IT SIMPLE

*Slow Down, Be Still,
and
Learn the Art of
Savoring Life*

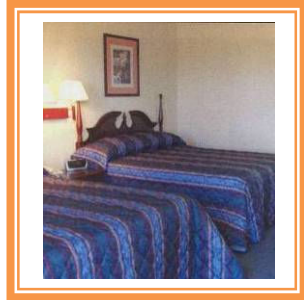
FPCA Women's Retreat
March 25-27, 2011
Lakeview
Conference Center



OUR ACCOMMODATIONS

Sign in at the Adams-Mangrum Lodge, a two-story building with an elevator. Lodge accommodations will be the same for everyone - each room sleeps two people (two double beds) and has a private bath.

Mealtimes are as scheduled, with no carryout allowed. If you cannot be at the conference center by 6:30 on Friday, let us know and we will provide a sack lunch for you.



Registration begins Sunday, February 6, and ends Sunday, March 6.

- Early bird special: \$75/double, \$105/single
- After February 19: \$85/double, \$115/single

Scholarships are available. For more information, contact Bev Koch or Pastor Rob.

OUR SPEAKER – *Mally Baum*

Mally was born and raised in Milwaukee, Wisconsin, and came to Texas to attend Southern Methodist University. She has been involved in ministry since that time, working first as a youth director and then in campus ministry.



In 2001, her husband and children agreed that it was “now or never,” and they moved to Austin so Mally could attend Austin Presbyterian Theological Seminary. She received her Master of Divinity degree in 2004, and came to Trinity Presbyterian in McKinney as their first-ever associate pastor in 2005. Her responsibilities include mission, evangelism, working with the deacons, adult education, pastoral care, back-up preaching, and anything else that’s needed.

Mally and her husband Chuck have two sons. Alec is a sophomore at Yale, and Christian is a senior at McKinney Boyd High School. Their household also includes Mally’s father, Chet Rohn, who moved to Texas from Wisconsin “to make sure there are groceries in the house.”

A FEW SUGGESTIONS

Important details you will want to know!

- Wear comfortable casual clothing, especially shoes.
- Items to bring with you:
 - Your Bible
 - Toiletries (including soap)
 - Games or cards for evening fun
- Arrive any time after 3 p.m. on Friday and leave by noon on Sunday.
- Snacks for the evenings - feel free to bring something to share!
- Five meals are included with our accommodations: Friday night dinner at 6:30; Saturday breakfast at 7:30; lunch at noon; dinner at 6:00; and Sunday breakfast at 7:30. Please be **on time** for meals, not early, not late.
- Saturday afternoon is reserved for free time. Several activities related to our study will be available in the meeting room. Waxahachie shopping is about a 15-minute drive, or you can explore the lovely grounds and relax as you choose.



*Slow, ^{be} Still, Savor...
down*

THERE’S A PLACE FOR YOU.

KEEPING IT SIMPLE

March 25 to March 27, 2011 FPCA Women's Retreat Registration Form

Name: _____

Address: _____

Home Phone
Number: _____

Cell Phone Number: _____

E-mail Address: _____

Roommate Request: _____

Do you have any special
needs? _____

Do you need a ride? _____ When can you leave on Friday? _____

Could you give someone a
ride? _____ When can you leave on Friday? _____

Registration Deadline: Sunday, March 6, 2011

Early bird special: \$75/double occupancy, \$105/single occupancy

After February 19: \$85/double occupancy, \$115/single occupancy

Make checks payable to: FPCA Women's Retreat

Scholarships are available. For more information, contact Bev Koch or Pastor Rob.

Questions? Call Bev Koch at 817-261-3202.

You will receive a confirmation letter with a map to the conference center.